

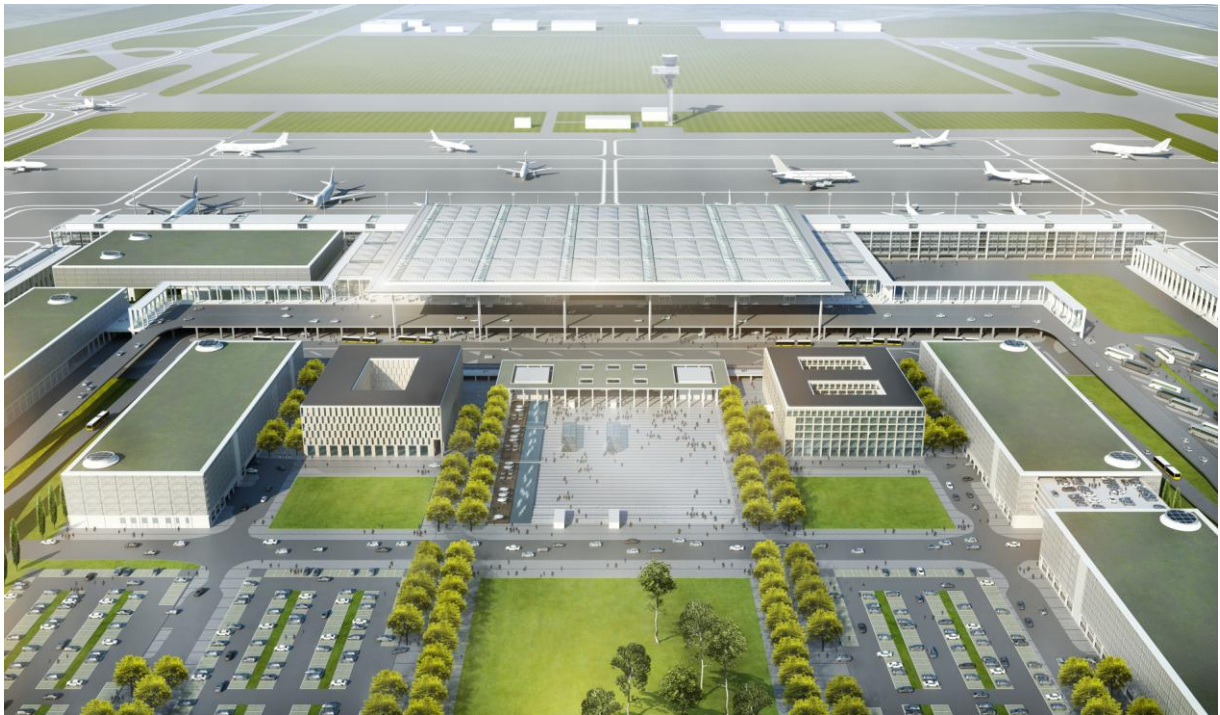
Facts & Figures

Capital Airport BBI: Airport City

Airport City

The BBI Airport City will be located directly in front of the terminal of the new BBI Airport. This urbane new service complex is being developed on a 16-hectare plot. Investors will be able to choose from a number of variable plots aligned along a central plaza and will be asked to develop buildings with six storeys. Altogether, up to 148,000 m² of gross floor area can be created here. The outstanding, exceptionally convenient location and the excellent connecting infrastructure put the new BBI Airport City firmly in the top category of new development opportunities.

Seven buildings will be built in the Airport City in time for the opening of BBI on 3 June 2012.



Visualisation: Björn Rolle

4-star superior Steigenberger Hotel

- Investor: ECE Projektmanagement G.m.b.H & Co. KG
- Operator: Steigenberger Hotels AG
- Plot: 4,300 m²

Description:

The 4-star superior hotel of Frankfurt-based Steigenberger Hotels AG will offer 322 rooms, including 27 suites, as well as nine superbly equipped conference and function rooms in a conference facility spanning 1,500 square metres, international cuisine and a spacious spa area.

An office and service complex

- Investor: Fay Projects GmbH
- Plot: 4,300 m²
- Office space: 24,000 m²

Description:

The building, i.e. the Berlin Brandenburg Airport Centre (BAC), will blend in harmoniously with its surroundings and impress due to its high-quality representative office with modern, ambitious and functional architecture. The letting process has already begun for the limited office space.

Four multi-storey car parks and a car hire centre

- Lessor: Deutsche Anlagen-Leasing GmbH & Co. KG (DAL)

Descriptions:

Inbound and outbound passengers will have a total of around 10,000 parking spaces at their disposal. An exclusive multi-storey car park will be built directly to the south of the new terminal building. A further three multi-storey car parks will be conveniently located inside the Airport City, offering optimum convenience and everything within a short distance. The terminal will be just a few minutes by foot from the Airport City thanks to a feeder level.

A modern car hire and service centre will be built to the south-east of the terminal. This centre is characterised by the fact that it is easily accessible to passengers and car hire customers and within a short walking distance from the terminal, and that all requirements and processes (vehicle return, processing and provision) are pooled at one location.

Flughafen Berlin-Schoenefeld GmbH

Press Office

Ralf Kunkel

Phone +49 30 6091-2055

Fax +49 30 6091-1643

www.berlin-airport.de

www.viaberlin.com